

GT SERIES

**Smith**  
CAST IRON BOILERS



GT series

ULTRA EFFICIENT HOT WATER  
RESIDENTIAL BOILER

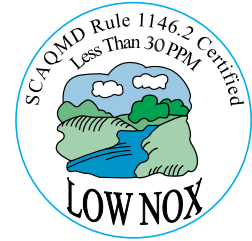
**THE  
HEATING  
Pros**



# GT series

**ALL-NEW, HIGH-EFFICIENCY**

**92% +  
AFUE**



## INSTALLATION FLEXIBILITY

- Available in both Natural Gas and Propane versions with a modulation system that eliminates additional models.
- Patented 316L stainless condensing heat exchanger provides ultimate efficiencies.
- All connections are conveniently located for ease of installation.
- The distinctive casing design reduces costly standby losses, while virtually eliminating combustion noises.
- Wall mount configuration saves valuable floor space.
- Vents easily with conventional ABS, PVC or CPVC plastic piping.
- State-of-the-art sealed modulation combustion system with hot surface ignition.
- Low Nox- certified by the state of California's South Coast Air Quality Management District (SCAQMD) Protocol Rule 1146.2 and Ventura County APCD Rule 74.11.1.



## THE ALL-NEW SMITH COMBUSTION SYSTEM

Smith's new state-of-the-art combustion system allows the GT Boiler to modulate the burner to the exact size required to meet the conditions of the system. The GT incorporates an electronic state-of-the-art combustion system to reduce the amount of gas that is injected into the burner, to ensure proper combustion throughout the full range of modulation. This system also compensates for extended venting; therefore, adjustments are not required between short and long vent runs. The GT is a totally sealed combustion system: all combustion air is drawn from outside, used for combustion, and then expelled. This eliminates any need for fresh air intake into the room, thereby decreasing heating costs.



## SIMPLE MAINTENANCE AND SERVICE



Clearly marked components and wiring for ease of maintenance and service.

## QUALITY COMPONENTS



## ALL-NEW SENTRY 2100

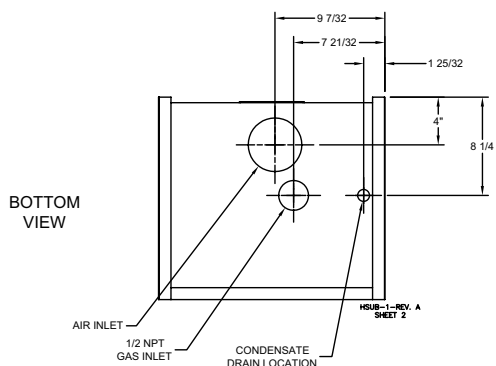
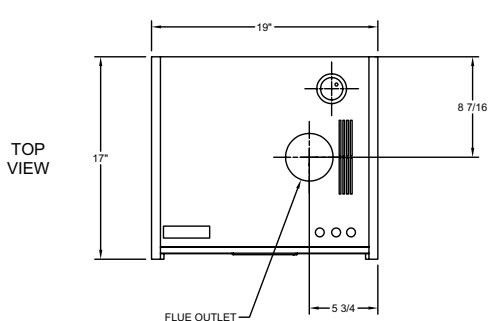
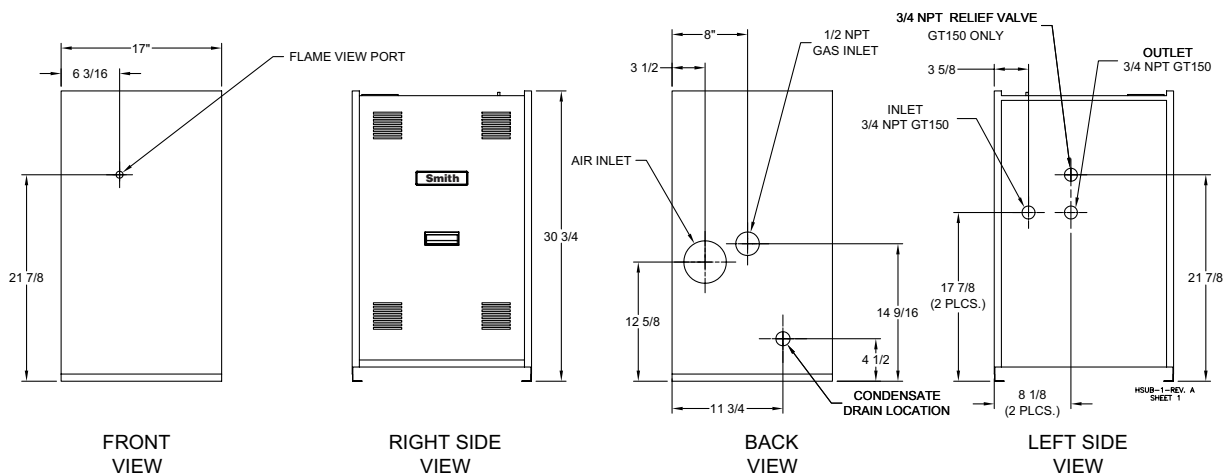


- Control is fully enclosed in impact-resistance enclosure
- Multifunctional LED display system
- Digital set point for unmatched accuracy
- Provides all safety and operational functions
- Operates burner, heating pump, and auxiliary indirect pump or valve
- Provided with outdoor sensor for automatic boiler temperature reset
- Pump exerciser routine activates pump for five seconds every 72 hours to prevent seizing
- Internal diagnostic system continuously monitors for errors
- Designed to withstand power dips and spikes

# GT series

## HOT WATER RESIDENTIAL BOILER

### GT-150/GT-200



### General Specifications

	GT-150	GT-200	GT-400
Size (L x W x H)	19" x 17" x 31"	19" x 17" x 31"	23.5" x 21" x 36"
Weight	80 lbs.	110 lbs.	205 lbs.
Max. Pressure	30 PSI	30 PSI	145 PSI
Gas Type	Natural, Propane	Natural, Propane	Natural, Propane
Max. 3" Vent	105' equivalent	105' equivalent	4"-30', 6"-65' eqv.
Gas Line Size	1/2" NPT	1/2" NPT	3/4" NPT
Max. Supply Water	200°F	200°F	200°F
Min. Return Water	30°F	30°F	40°F
Oxygen Tube Barrier	Required	Required	Required
Certification	CSA	CSA, ASME	CSA, AGA, CSAus, ASME

### Heating Specifications

	GT-150	GT-200	GT-400
BTU Input x 1000	34 - 150	25 - 200	75 - 399
BTU Output x 1000	31.2 - 138	22.7 - 187	69 - 365
S.S. Efficiency	98%	97%	96%
AFUE	92%	91%	92.7%
PSI Drop@ GPM	12' @ 8	13' @ 10	9' @ 20
Supply/Return	3/4" NPT	1" NPT	1 1/4" NPT
Boiler Modulation Ratio	6:1	8:1	5.3:1
Flow & Level Switch	Optional	Optional	Installed

**Smith**  
CAST IRON BOILERS

Westcast, Inc., 260 North Elm Street, Westfield, MA 01085

(413) 562-9631 • FAX: (413) 562-3799

www.smithboiler.com

A MESTEK COMPANY

